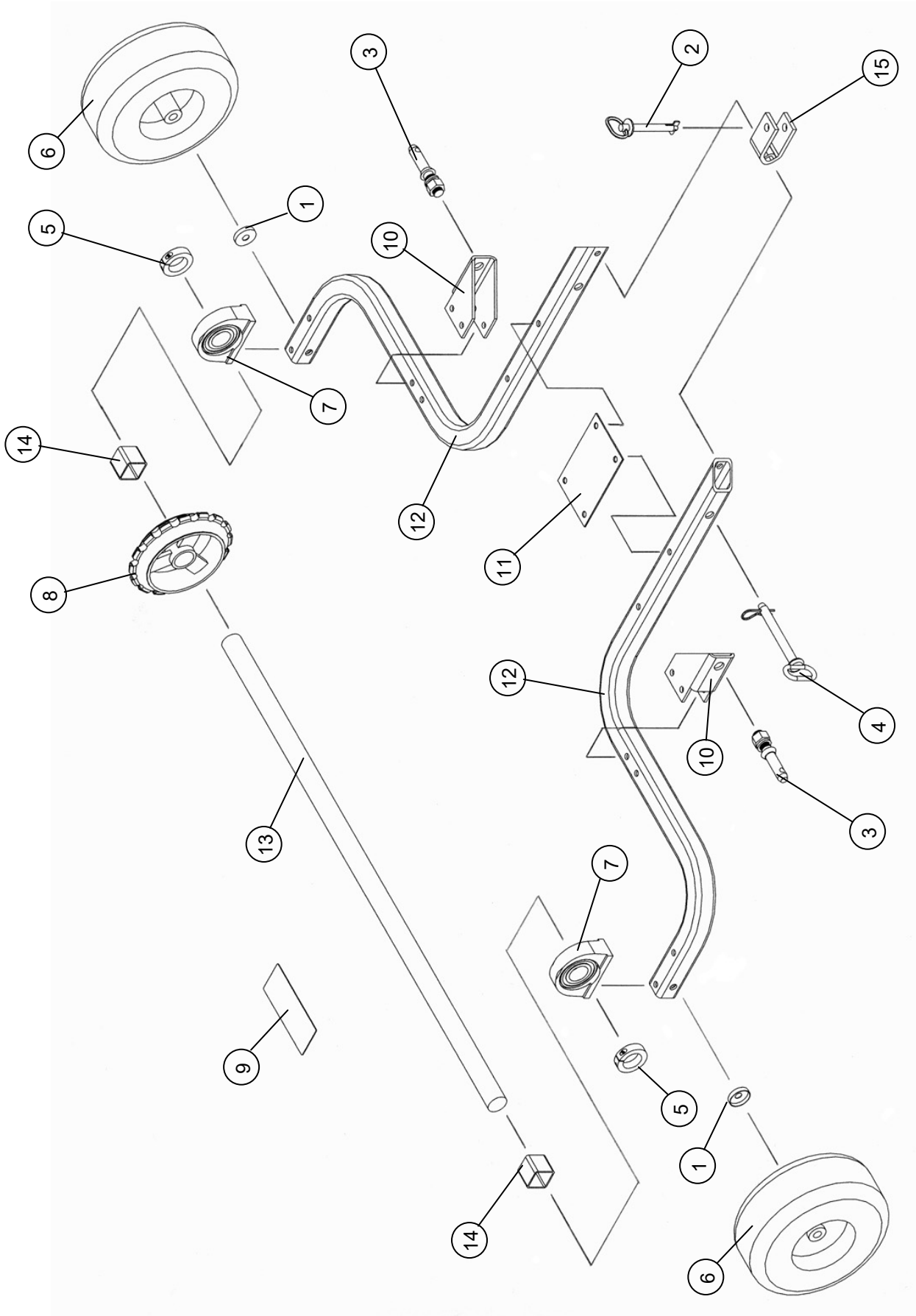


MODELS TP2148, TP2760 & TP3272

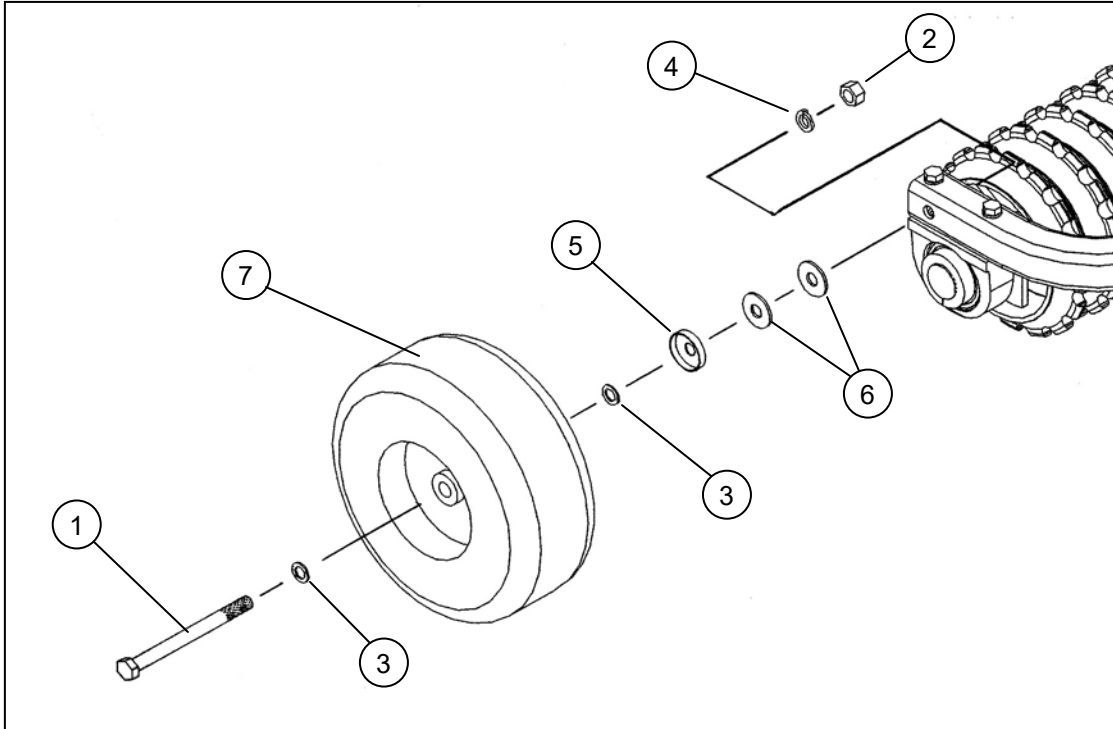
(See drawings below for additional parts)

| <u>Item</u> | <u>Part #</u> | <u>Description</u> | <u>Qty.</u> |
|--------------------|----------------------|--|--------------------|
| 1 | 214021 | Cup Washer - (Wheel Kit Only) | 2 |
| 2 | 216012 | Tension Lock Pin (5/8" Dia. x 3-1/2" Long) | 1 |
| 3 | 216015 | Lift Arm Pin (7/8" Dia. X 5-1/2" Long) - (3-Point Kit Only) | 2 |
| 4 | 216016 | Fixed Handle Hitch Pin (3/4" Dia. X 7-1/4" Long) - (3-Point Kit Only) | 1 |
| 5 | 222013 | Single Split Collar (1.75" I.D. x .69" Thick) | 2 |
| 6 | 226001 | Offset Wheel Assy., Pneumatic Turf Tread 2 Ply (13/500 x 6) - (Wheel Kit Only)(<i>Wheel Assy. Drawing Below</i>) | ~ |
| 7 | 243012 | Tapped Pillow Block Bearing (45mm Bore) | 2 |
| 8 | 259007 | Packer Wheel (1-3/4" Shaft, 9-1/2" Dia.) | 21-32 |
| 9 | 275018 | Till-Ease Name Decal | 2 |
| 9 | 275019 | Kunz Decal | 1 |
| 10 | 500053 | 3-Point Bracket - (3-Point Kit Only) | 2 |
| 11 | 500054 | Connector Plate | 2 |
| 12 | 500055 | Cultipacker Frame - Model TP3272 | 2 |
| 12 | 500058 | Cultipacker Frame - Model TP2148 | 2 |
| 12 | 500061 | Cultipacker Frame - Model TP2760 | 2 |
| 13 | 500056 | Shaft - Model TP3272 | 1 |
| 13 | 500059 | Shaft - Model TP2148 | 1 |
| 13 | 500062 | Shaft - Model TP2760 | 1 |
| 14 | 500057 | Spacer | 2 |
| 15 | 800018 | Tongue Clevis | 1 |

PARTS DRAWING FOR MODELS TP2148, TP2760 & TP3272



WHEEL ASSEMBLY AND MOUNTING PARTS



| <u>Item</u> | <u>Part #</u> | <u>Description</u> | <u>Qty.</u> |
|-------------|---------------|--|-------------|
| 1 | 202140 | Hex Head Bolt 5/8" x 7.5" | 2 |
| 2 | 212013 | Hex Nut - 5/8" | 2 |
| 3 | 214018 | Machinery Washer 5/8" I.D. x 1" O.D. | 4 |
| 4 | 214020 | Lock Washer - 5/8" | 2 |
| 5 | 214021 | Cup Washer | 2 |
| 6 | 214029 | Std. Flat Washer - 5/8" | 4 |
| 7 | 226001 | Offset Wheel Assy., (13/500 x 6, 2 Ply Turf) (Includes Tire, Rim & Bearings) | 2 |
| | 243007 | Wheel Bearing-Precision Sealed (1-3/8" O.D. x 5/8" I.D.) | 4 |
| | 600283 | Wheel Bearing Spacer | 2 |