

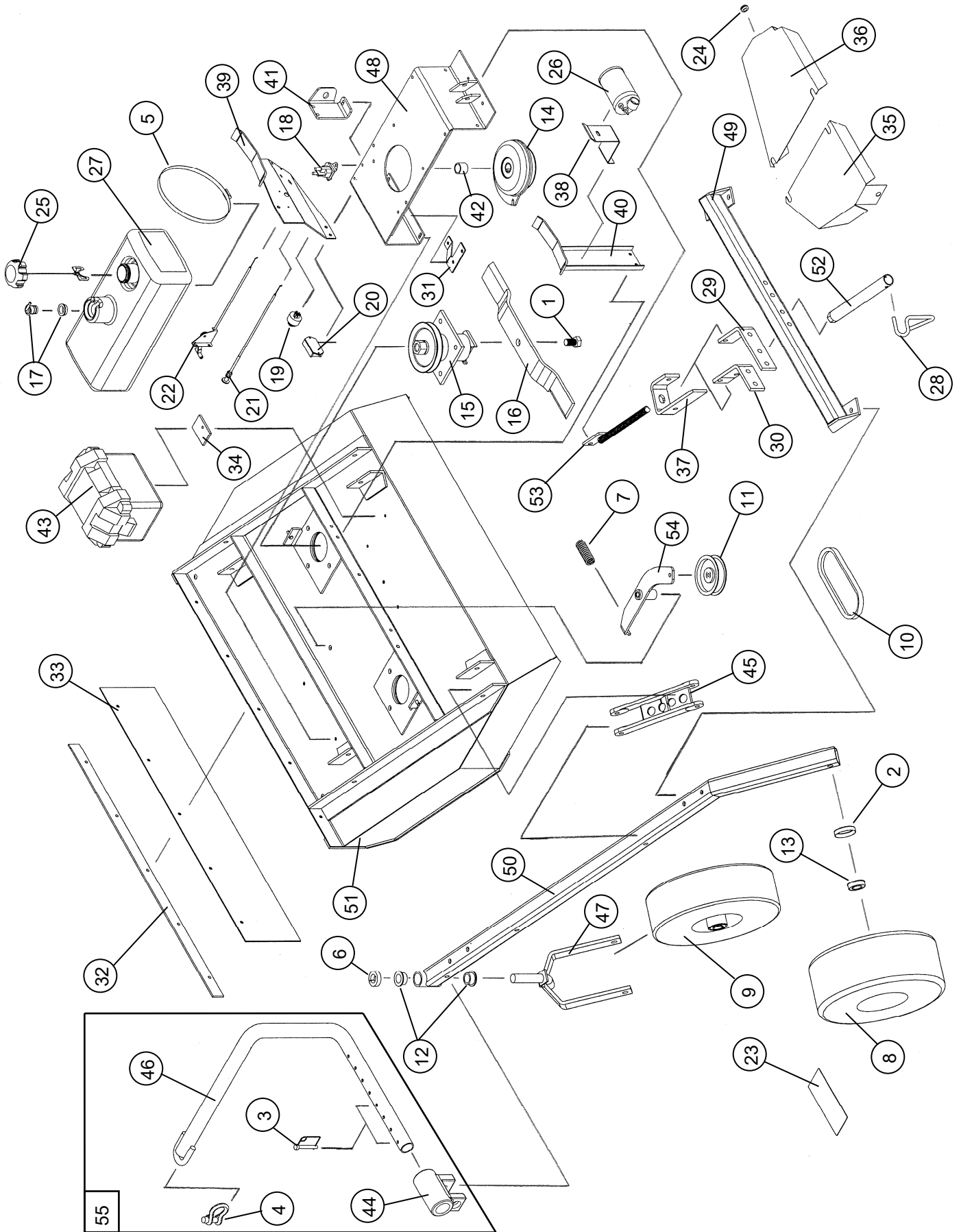
MODEL MR44BE

(See drawings below for additional parts)

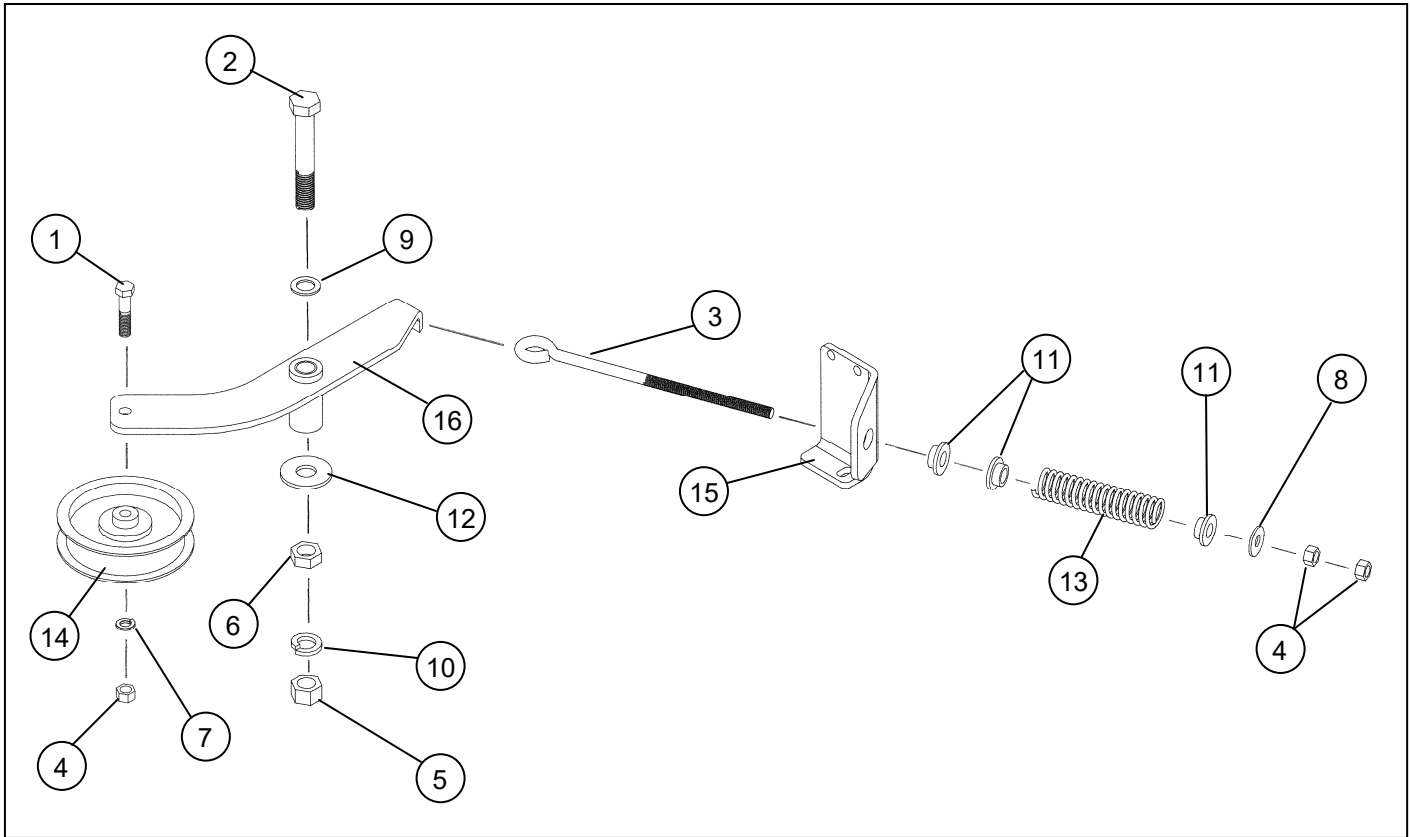
| <u>Item</u> | <u>Part #</u> | <u>Description</u> | <u>Quantity</u> |
|-------------|---------------|---|-----------------|
| 1 | 202141 | Blade Bolt, .75"-16UNF x 1.25" | 2 |
| 2 | 214030 | Cup Washer | 6 |
| 3 | 216002 | Wire Lock Pin, .31" x 2.50" | 2 |
| 4 | 216009 | Screw Pin Shackle Clevis | 1 |
| 5 | 222005 | Worm Drive Hose Clamp (7-7/8" to 9-1/8" Clamping Dia.) | 2 |
| 6 | 222012 | Single Split Collar (1" I.D. x 1/2" Thick) | 2 |
| 7 | 225005 | Compression Spring, 4-1/2"L x 1-3/32" O.D. x .125" Wire dia. (Clutch Drawing Below) | 1 |
| 8 | 226012 | Offset Wheel Assy. (15/600 x 6, 4 Ply Turf) (See Wheel Assy. Drawing Below) | 2 |
| 9 | 226013 | Centered Wheel Assy. (5.30/4.50 x 6, 4 Ply Stud) (See Wheel Assy. Drawing Below) | 2 |
| 10 | 238007 | "V" Belt, .62" x 77" O.C. (B74K) | 1 |
| 11 | 241001 | Flat Idler, 4" O.D. x 3/8" Hole | 1 |
| 12 | 243010 | Plastic Bearing (1-3/8" O.D. x 1.00" I.D., Flange, Nylon) | 4 |
| 13 | 243015 | Precision Sealed Wheel Bearings (2" O.D. x 1" I.D.) | 8 |
| 14 | 258018 | Electric Clutch | 1 |
| 15 | 258023 | Spindle Assy. (See Spindle Drawing Below) | 2 |
| 16 | 259008 | Offset Mower Blade, 2-1/2" Wide, 23" Long, 3/4" Hole | 2 |
| 17 | 260004 | Roll-Over / Fuel Vapor Valve (Includes Gromet) | 1 |
| 18 | 264000 | Solenoid | 1 |
| 19 | 264010 | Ignition Switch | 1 |
| 20 | 264003 | Hour/Tack Meter | 1 |
| 21 | 269010 | Choke Control, 27" | 1 |
| 22 | 269009 | Throttle Control, 27" | 1 |
| 23 | 275001 | Control Panel Decal, Starting Instructions | 1 |
| 23 | 275002 | Warning Decal General | 1 |
| 23 | 275003 | Danger Decal, Cut Finger | 2 |
| 23 | 275007 | Warning Decal, Belt Sheild | 2 |
| 23 | 275011 | Clutch Engagement Decal | 1 |
| 23 | 275019 | Name Decal, Kunz | 1 |
| 23 | 275021 | Name Decal, AcrEase | 1 |
| 23 | 275024 | Name Decal, 44" Rough Cut | 1 |
| 24 | 277002 | Rubber Gromet | 6 |
| 25 | 277035 | Gas Cap - Audible Click/Tethered, Non-Venting | 1 |
| | | <i>Note: Gas Cap 277035 is an EPA Certified Component . Only Replace with Gas Cap 277035.</i> | |
| 26 | 277036 | Carbon Canister - 300cc (California Only) | 1 |
| | | <i>Note: Canister 277036 is an EPA Certified Component . Only Replace with Canister 277036.</i> | |
| 27 | 277040 | Fuel Tank, 3 Gal., 3-Layer EPA Certified | 1 |
| | | <i>Note: Fuel Tank 277040 is an EPA Certified Component . Only Replace with Fuel Tank 277040.</i> | |
| | 277041 | Fuel Tank Grommet (Fuel Pickup Tube Location) | 1 |
| 28 | 600146 | Crank Arm | 2 |
| 29 | 600185 | Top Long Support | 1 |
| 30 | 600186 | Top Short Support | 1 |
| 31 | 600198 | Clutch Stop | 1 |
| 32 | 600252 | Flap Retainer Strip | 1 |
| 33 | 600253 | Safety Belting | 1 |
| 34 | 600254 | Battery Box Spacer | 2 |
| 35 | 600264 | Belt Sheild, Left | 1 |
| 36 | 600265 | Belt Sheild, Right | 1 |
| 37 | 600268 | Height Adjust Support | 1 |

| <u>Item</u> | <u>Part #</u> | <u>Description</u> | <u>Quantity</u> |
|-------------|---------------|--|-----------------|
| 38 | 600291 | Canister Support (California Only) | 1 |
| 39 | 600305 | Control Panel | 1 |
| 40 | 600306 | Tank Support | 1 |
| 41 | 600314 | Spring Support Bracket | 1 |
| 42 | 600315 | Tube Spacer (1.32" O.D. x .88" Long) | 1 |
| 43 | 900049 | Battery Box Assy. | 1 |
| | 264004 | Battery (12V AGM Sealed) | 1 |
| 44 | 900058 | Hitch Pivot | 1 |
| 45 | 900061 | Pivot Arm | 4 |
| 46 | 900082 | Tongue | 1 |
| 47 | 900148 | Caster Fork (Includes 1" Washers) | 1 |
| 48 | 900150 | Engine Support Bracket | 1 |
| 49 | 900154 | Upper Actuator Mount | 2 |
| 50 | 900155 | Carrier Arm | 2 |
| 51 | 900156 | Mower Deck (Call to Order) | 1 |
| 52 | 900157 | Height Adjust Nut | 1 |
| 53 | 900158 | Screw Adjuster | 1 |
| 54 | 900192 | Idler Arm Assy. (Includes Bronze Bearings) (Clutch Drawing Below) | 1 |
| | 243016 | Bronze Bearing, 5/8" I.D. x 3/4" O.D. x 3/4" Long | 2 |
| 55 | 900083 | ATV Tongue Assy. (Includes all Mounting Hardware and Pins) | 1 |

PARTS DRAWING FOR MODELS MR44BE

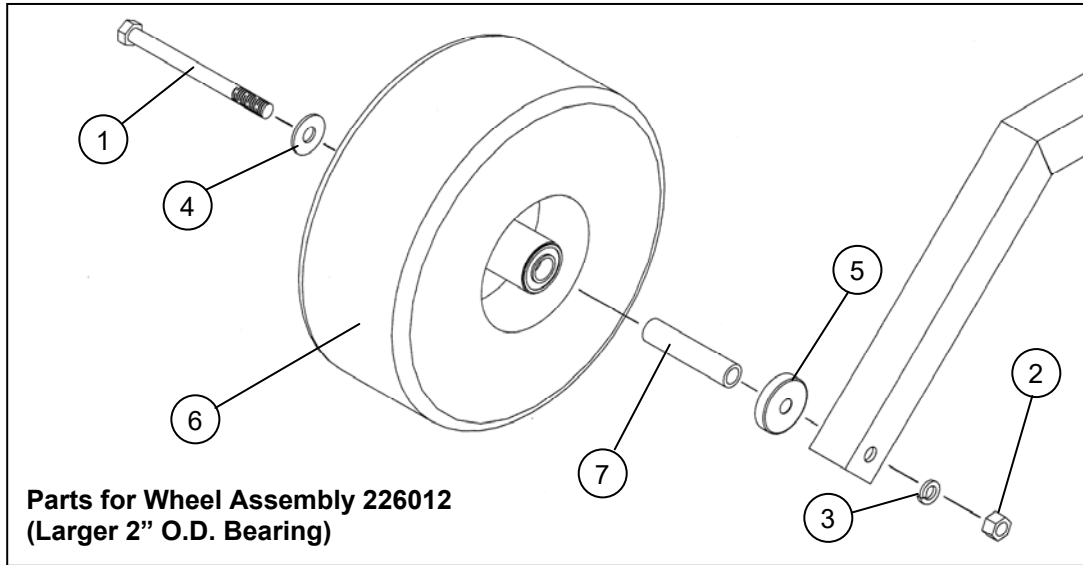


BELT TENSIONER (IDLER ARM) PARTS



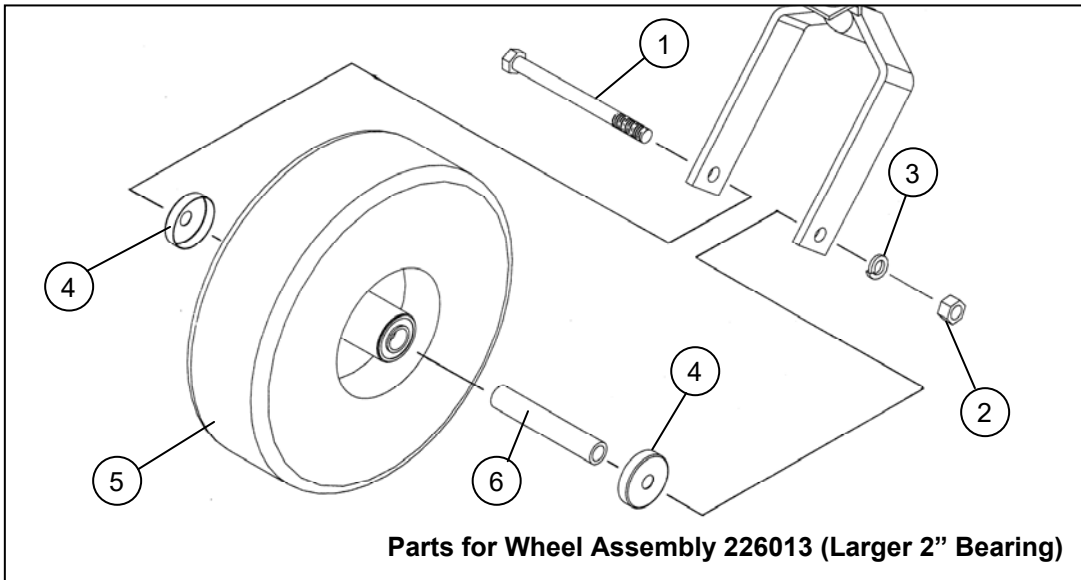
| Item | Part # | Description | Qty. |
|-------------|---------------|---|-------------|
| 1 | 202041 | Hex Head Bolt 3/8" x 1-3/4" Long | 1 |
| 2 | 202152 | Hex Head Bolt 5/8" x 4" Long | 1 |
| 3 | 204016 | Eye Bolt 3/8" x 8" Usable Length | 1 |
| 4 | 212002 | Hex Nut 3/8" | 3 |
| 5 | 212013 | Hex Nut 5/8" | 1 |
| 6 | 212021 | Hex Jam Nut 5/8" | 1 |
| 7 | 214002 | Lock Washer 3/8" | 1 |
| 8 | 214005 | Standard Flat Washer 3/8" | 1 |
| 9 | 214018 | Machinery Washer 5/8" I.D. x 1" O.D. | 1 |
| 10 | 214020 | Lock Washer 5/8" | 1 |
| 11 | 214027 | Shoulder Washer - Nylon | 3 |
| 12 | 214029 | Standard Flat Washer 5/8" | 2 |
| 13 | 225005 | Compression Spring, 4.50" Long x 1-3/32" O.D. x .125" Wire dia. | 1 |
| 14 | 241001 | Flat Idler, 4" O.D. x 3/8" Hole | 1 |
| 15 | 600314 | Spring Support Bracket | 1 |
| 16 | 900192 | Idler Arm Assy. (Includes Bronze Bearings) | 1 |
| | 243016 | Bronze Bearing, 5/8" I.D. x 3/4" O.D. x .75" Long | 2 |

REAR WHEEL ASSEMBLIES AND MOUNTING PARTS



| <u>Item</u> | <u>Part #</u> | <u>Description</u> | <u>Qty.</u> |
|-------------|---------------|--|-------------|
| 1 | 202140 | Hex Head Bolt 5/8" x 7.5" | 2 |
| 2 | 212013 | Hex Nut - 5/8" | 2 |
| 3 | 214020 | Lock Washer - 5/8" | 2 |
| 4 | 214029 | Standard Flat Washer - 5/8" | 2 |
| 5 | 214030 | Cup Washer (For Larger Bearing) | 2 |
| 6 | 226012 | Offset Wheel Assy. (15/600 x 6, 4 Ply Turf) (Includes Tire, Rim, Bearing & Spanner Tube) | 2 |
| | 226006 | Tire - Replacement (15/600 x 6, 4 Ply Turf) | 2 |
| | 243015 | Precision Sealed Wheel Bearings (2" O.D. x 1" I.D.) | 4 |
| | | Note: See the Miscellaneous Parts Section Below for Flatproof Tire Options. | |
| 7 | 600308 | Spanner Tube | 2 |

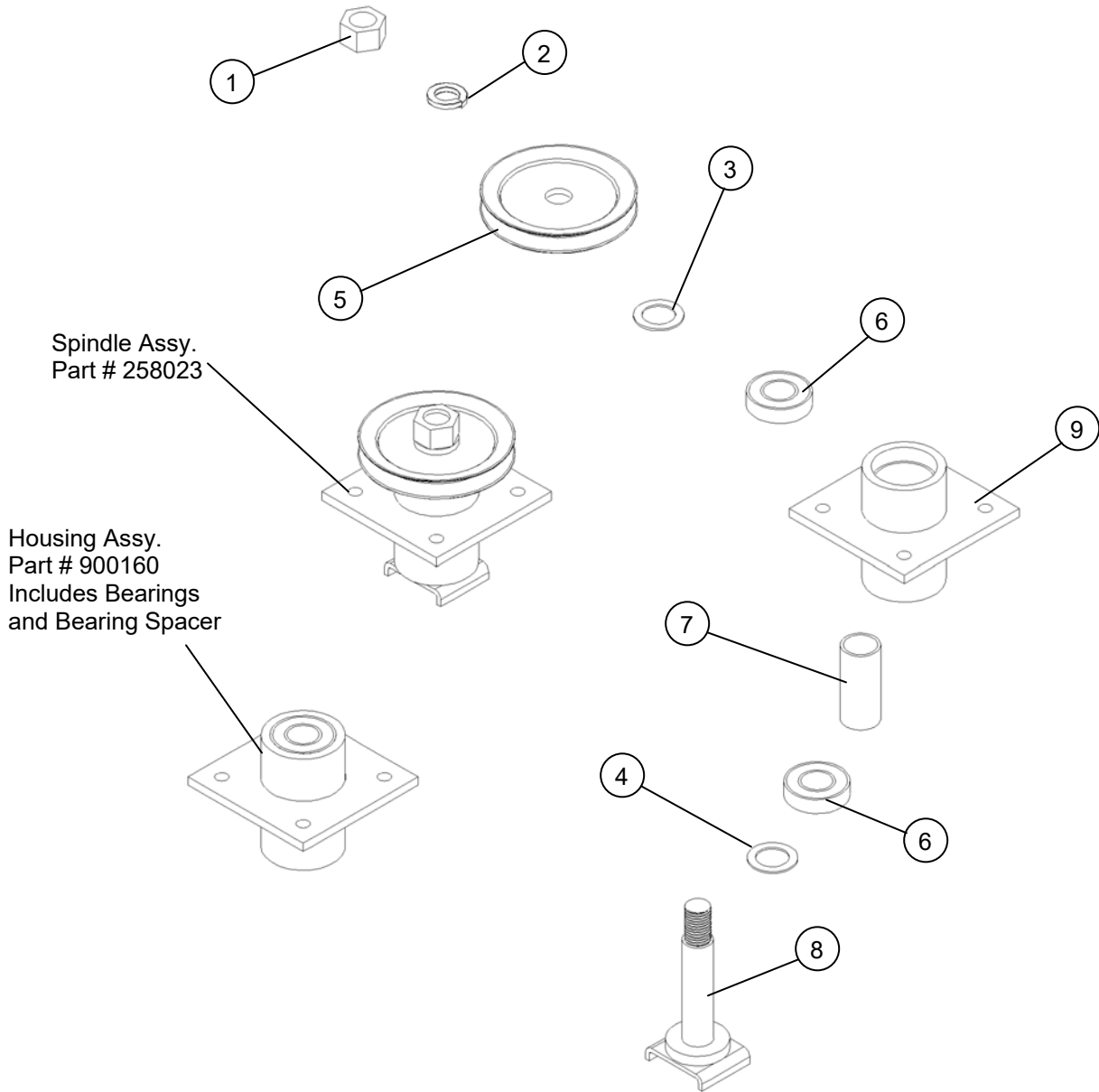
FRONT WHEEL ASSEMBLIES AND MOUNTING PARTS



| <u>Item</u> | <u>Part #</u> | <u>Description</u> | <u>Qty.</u> |
|-------------|---------------|--|-------------|
| 1 | 202140 | Hex Head Bolt 5/8" x 7.5" | 2 |
| 2 | 212013 | Hex Nut - 5/8" | 2 |
| 3 | 214020 | Lock Washer - 5/8" | 2 |
| 4 | 214030 | Cup Washer (For Larger Bearing) | 4 |
| 5 | 226013 | Centered Wheel Assy. (5.30/4.50 x 6, 4 Ply Stud) (Includes Tire, Rim, Bearings & Spanner Tube) | 2 |
| | 226005 | Tire - Replacement (5.30/4.50 x 6, 4 Ply Stud) | 2 |
| | 243015 | Precision Sealed Wheel Bearings (2" O.D. x 1" I.D.) | 4 |
| | | Note: See the Miscellaneous Parts Section Below for Flatproof Tire Options. | |
| 6 | 600309 | Spanner Tube | 2 |

PARTS BREAKDOWN FOR ROUGH CUT SPINDLE ASSY.

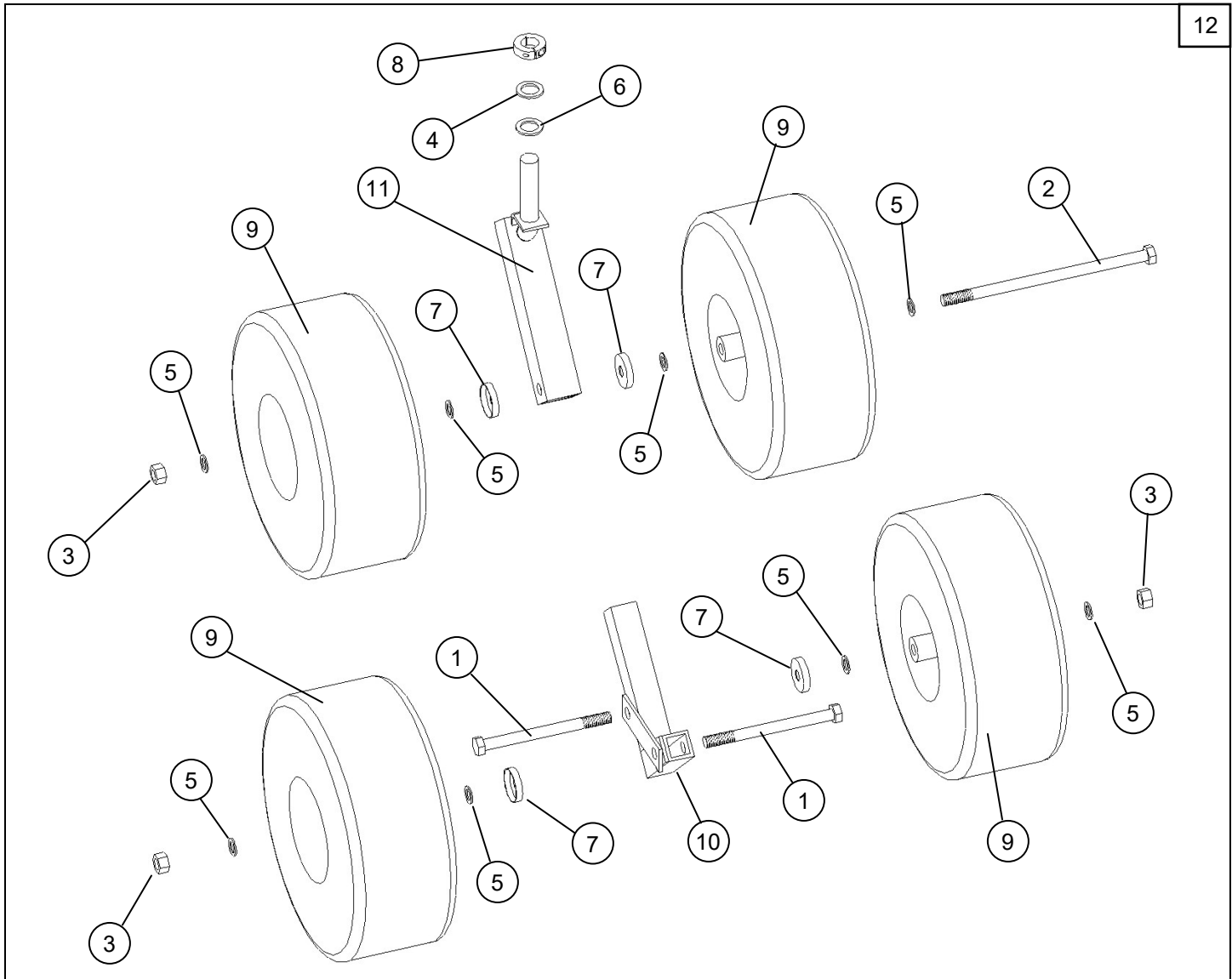
(PART # 258023)



| <u>Item</u> | <u>Part #</u> | <u>Description</u> | <u>Qty.</u> |
|-------------|---------------|--|-------------|
| 1 | 212009 | Std. Hex Nut 1.00" - 14NF | 2 |
| 2 | 214013 | Split Lock Washer 1.00" | 2 |
| 3 | 214014 | Machinery Washer 1.00" I.D. x 18 GA Thick | 2 |
| 4 | 214023 | Machinery Washer 1.25" I.D. x 14 GA Thick | 2 |
| 5 | 241011 | "V" Sheave 5.56" Dia. - 25 mm Bore | 2 |
| 6 | 243006 | Bearing 6206 - 2RST | 4 |
| 7 | 600271 | Bearing Spacer | 2 |
| 8 | 900075 | Spindle Shaft | 2 |
| 9 | 900159 | Spindle Hub (Not Sold Separately, Purchase 900160) | ~ |
| | 900160 | Replacement Housing Assy. | 2 |
| | 258023 | Replacement Spindle Assy. | 2 |

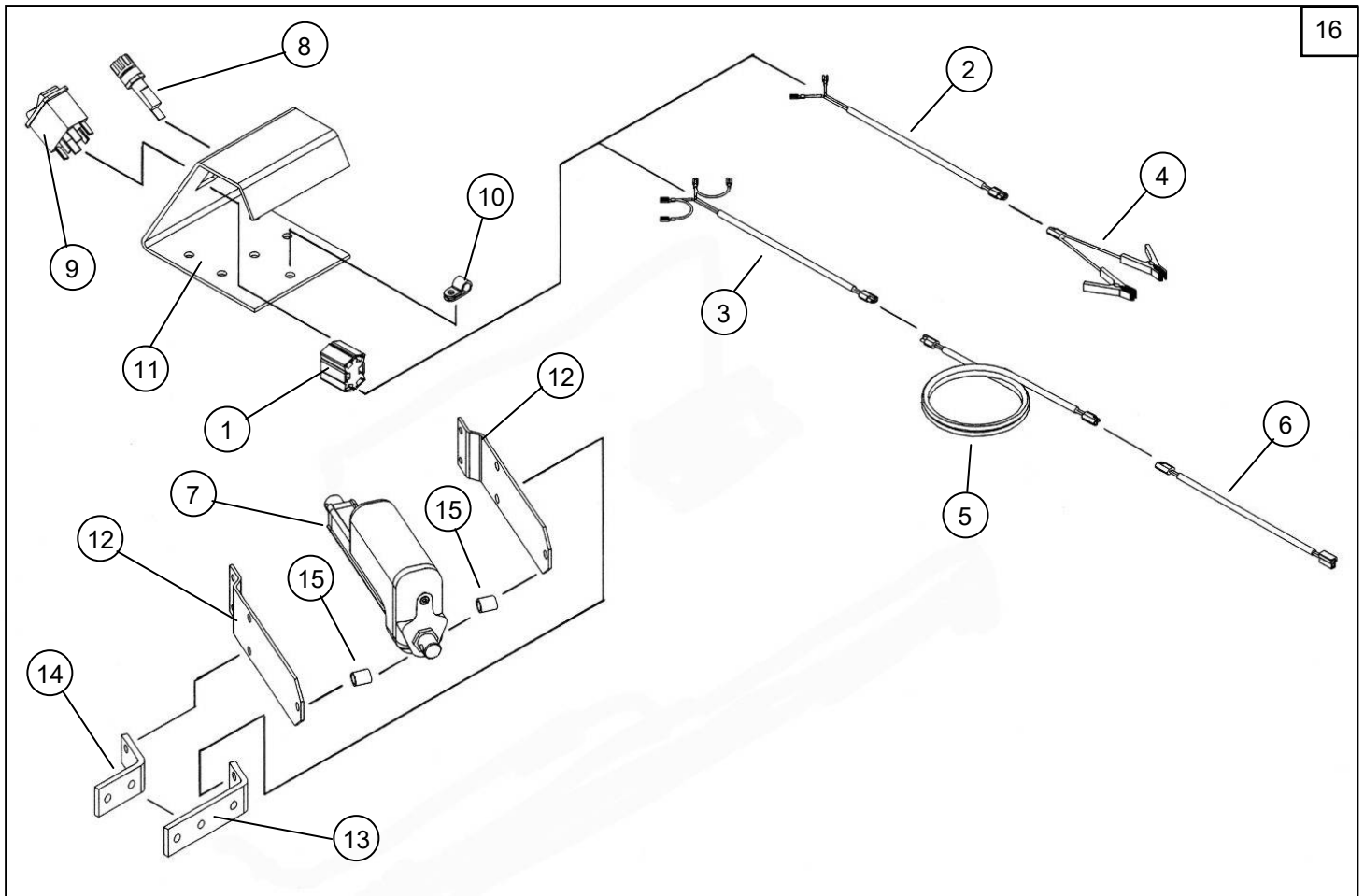
OPTIONAL WETLANDS KIT - (PART # 003905)

12



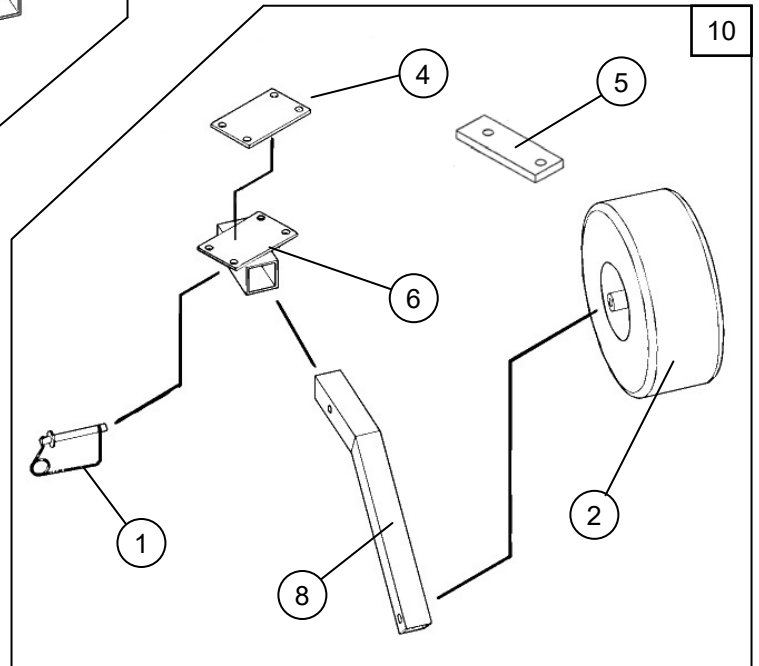
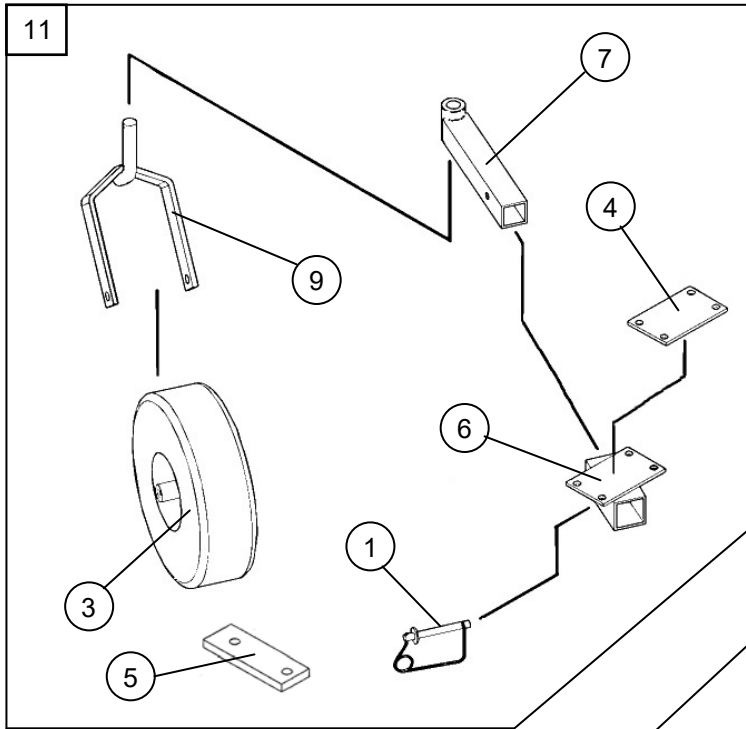
| <u>Item</u> | <u>Part #</u> | <u>Description</u> | <u>Qty.</u> |
|-------------|---------------|--|-------------|
| 1 | 202140 | Hex Head Bolt 5/8" x 7.5" | 2 |
| 2 | 202142 | Hex Head Bolt 5/8" x 12.0" | 3 |
| 3 | 212015 | Centered Lock Nut 5/8" | 5 |
| 4 | 214014 | Machinery Washer 1" I.D. x 1.5" O.D. x 18 GA | 2 |
| 5 | 214018 | Machinery Washer 5/8" I.D. x 1" O.D. | 16 |
| 6 | 214019 | Machinery Washer 1" I.D. x 1.5" O.D. x 10GA | 2 |
| 7 | 214021 | Cup Washer | 8 |
| 8 | 222012 | Single Split Collar 1" I.D. x 1/2" Thick | 2 |
| 9 | 226012 | Offset Wheel Assy. (15/600 x 6, 4 Ply Turf) <i>(See Wheel Assy. Drawing Above)</i> | 6 |
| 10 | 900091 | Rear Tire Extension | 1 |
| 11 | 900149 | Caster | 2 |
| 12 | 003905 | Wetlands Kit | 1 |

OPTIONAL ELECTRIC LIFT KIT - (PART # 003912)



| <u>Item</u> | <u>Part #</u> | <u>Description</u> | <u>Qty.</u> |
|-------------|---------------|--|-------------|
| 1 | 235061 | Six Contact Socket Connector | 1 |
| 2 | 235063 | Battery Wiring Harness | 1 |
| 3 | 235065 | Wiring Harness | 1 |
| 4 | 235066 | Battery Clip Harness | 1 |
| 5 | 235067 | Extension Cable | 1 |
| 6 | 235070 | Actuator Wiring Harness Assy. | 1 |
| 7 | 237003 | Electric Linear Actuator (8" Stroke) | 1 |
| 8 | 264006 | Fuse Holder | 1 |
| | 264009 | Fuse (30 Amp) | 1 |
| 9 | 264008 | Rocker Switch | 1 |
| 10 | 277030 | Fixed Diameter Cable Clamp | 2 |
| 11 | 500010 | Control Panel | 1 |
| | 275020 | Lift Control Decal | 1 |
| 12 | 600238 | Actuator Bracket | 2 |
| 13 | 600239 | Top Long Support | 1 |
| 14 | 600240 | Top Short Support | 1 |
| 15 | 600269 | Actuator Bracket Spacer | 2 |
| 16 | 003912 | Electric Lift Kit (For 44" Rough Cut Models) | 1 |

OPTIONAL FLOATATION KIT PARTS (PART #'s 003907 & 003908)



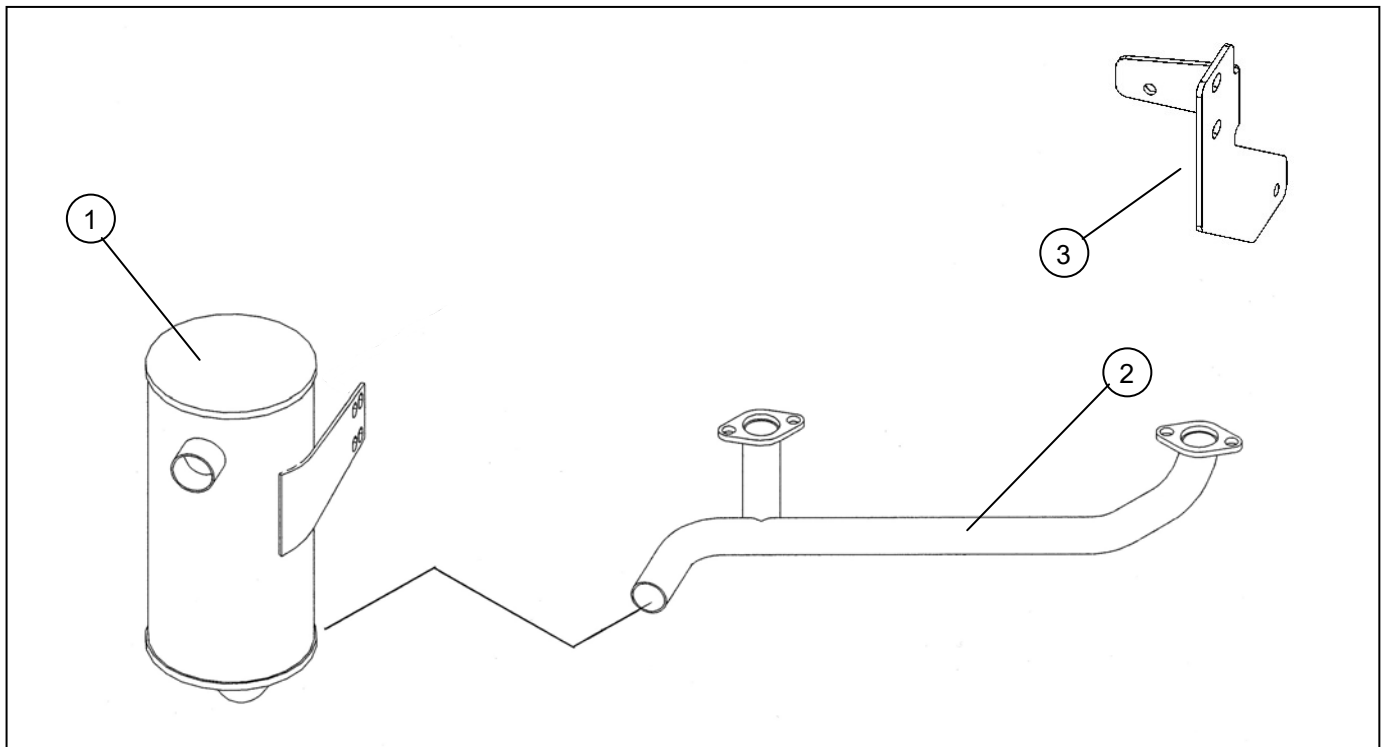
| <u>Item</u> | <u>Part #</u> | <u>Description</u> | <u>Qty.</u> |
|-------------|---------------|---|-------------|
| 1 | 216011 | Wire Lock Pin (1/2" x 3-1/2" Opening) | 2 |
| 2 | 226012 | Offset Wheel Assy. (15/600 x 6, 4 Ply Turf) (See Wheel Assy. Drawing Above) | 1 |
| 3 | 226013 | Centered Wheel Assy. (5.30/4.50 x 6, 4 Ply Stud) (See Wheel Assy. Drawing Above) | 1 |
| 4 | 600195 | Clamping Flat | 2 |
| 5 | 600272 | Spacer Flat (1/2" Thick) (Spaces Cross Brace Tubes Up) | 4 |
| 6 | 900107 | Receiver Assy. | 2 |
| 7 | 900108 | Caster Support | 1 |
| | 243010 | Plastic Bearing (1-3/8" O.D. x 1.00" I.D., Flange, Nylon) | 2 |
| 8 | 900109 | Rear Wheel Support | 1 |
| 9 | 900148 | Caster Fork (Includes 1" Washers) (Replaces Caster Fork 900073, Also Requires 222012) | 1 |
| | 222012 | Single Split Collar (1" I.D. x .1/2" Thick) | 1 |
| 10 | 003907 | Rear Floatation Kit | 1 |
| 11 | 003908 | Front Floatation Kit | 1 |

MISCELLANEOUS PARTS

AIR FILTERS, OIL FILTERS, BATTERY ETC.

| <u>Part #</u> | <u>Description</u> | <u>Qty.</u> |
|---------------|---|-------------|
| 226014 | Flatproof Wheel Assy. (15/600 x 6 - Urethane Foam)(Includes Tire, Rim & Bearings)(Optional Replacement for 226003) | 2 |
| 226015 | Flatproof Wheel Assy. (5.30/4.50 x 6 - Urethane Foam)(Includes Tire, Rim & Bearings)(Optional Replacement for 226004) | 2 |
| 257533 | Air Filter (Filter Only Use 257536 Also), Briggs (798897) - Used on 23HP Briggs Commercial Turf Engines | 1 |
| 257536 | Pre-Cleaner (Use With 257533 Air Filter), Briggs 593217) - Used on 23HP Briggs Commercial Turf Engines | 1 |
| 264003 | Hour/Tach Meter (Digital) | 1 |
| 264004 | Battery (12V AGM Sealed) | 1 |
| 277025 | Tire Sealer - 32 oz Bottle (Each Tire Requires 16 oz) | 2 |
| 277042 | Spare Key for Indak Ignition Switches (Used on 264001 & 264010) | 1 |

MR44BE EXHAUST PARTS -23HP BRIGGS COMMERCIAL TURF



| <u>Item</u> | <u>Part #</u> | <u>Description</u> | <u>Qty.</u> |
|-------------|---------------|--------------------|-------------|
| 1 | 257505 | Muffler - 5" | 1 |
| 2 | 257506 | Manifold | 1 |
| 3 | 600313 | Muffler Bracket | 1 |